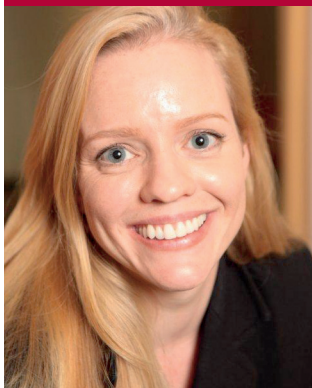


ZOË THOMPSON



YEAR OF CALL

1999, Middle Temple

EDUCATION

LLB (Hons), London School of Economics (1st Class)

ASSOCIATIONS

Employment Lawyers Association

“recommended.”

Legal 500 2011

“Tenacious on her feet and understanding of her clients.”

Legal 500 2011

AREAS OF PRACTICE

Employment Law
Personal Injury Law
Commercial and Property

PROFILE

Zoë is described by the Legal 500 as ‘*tenacious on her feet and understanding of her clients*’ and by Chambers and Partners as ‘*conscientious and direct*’. She has substantial experience of advocacy in the High Court, employment tribunals, and the appellate courts, including the Court of Appeal and the House of Lords. Her clients include some of the UK’s largest insurers, financial institutions and local authorities.

Zoë acts on behalf of employers, employees and trade unions. She has undertaken numerous tribunal hearings and appeals covering discrimination law, including age, race, sex, sexual orientation, religion, disability and part time worker status. She has considerable experience as an advocate and advisor in most other areas of employment work, including whistleblowing, wrongful dismissal, directors contracts, equal pay, bonus claims, and TUPE. She has also been involved at all stages of claims involving confidential information and post-termination restrictions.

Zoë also has a broad commercial practice which encompasses contract disputes, with a particular emphasis on employment and the re-organisation of businesses.



NINE ST JOHN STREET
EMPLOYMENT

Manchester M3 4DN
T 0161 955 9000
F 0161 955 9001
civil.clerks@9sjs.com
www.9sjs.com

